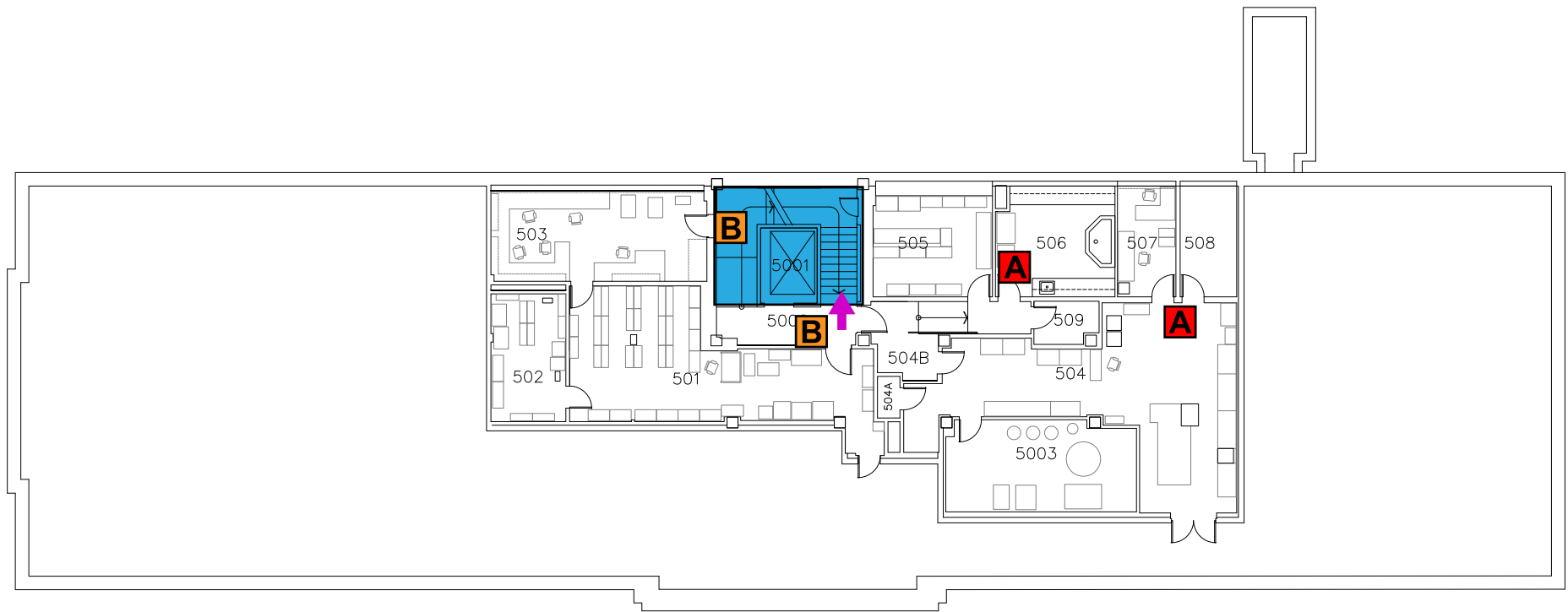


South Building - 5th Floor



A Fire extinguisher	D Eye wash	Stairway
B Fire pull station	E Defibrillator	F Fire blanket
C Emergency shower	Emergency exit paths/points	

In case of fire dial 314-362-4357. Use stairway for exit.
Do not use elevator.

**Emergency
Assembly Point (EAP):
Northeast corner of
Hudlin Park.**