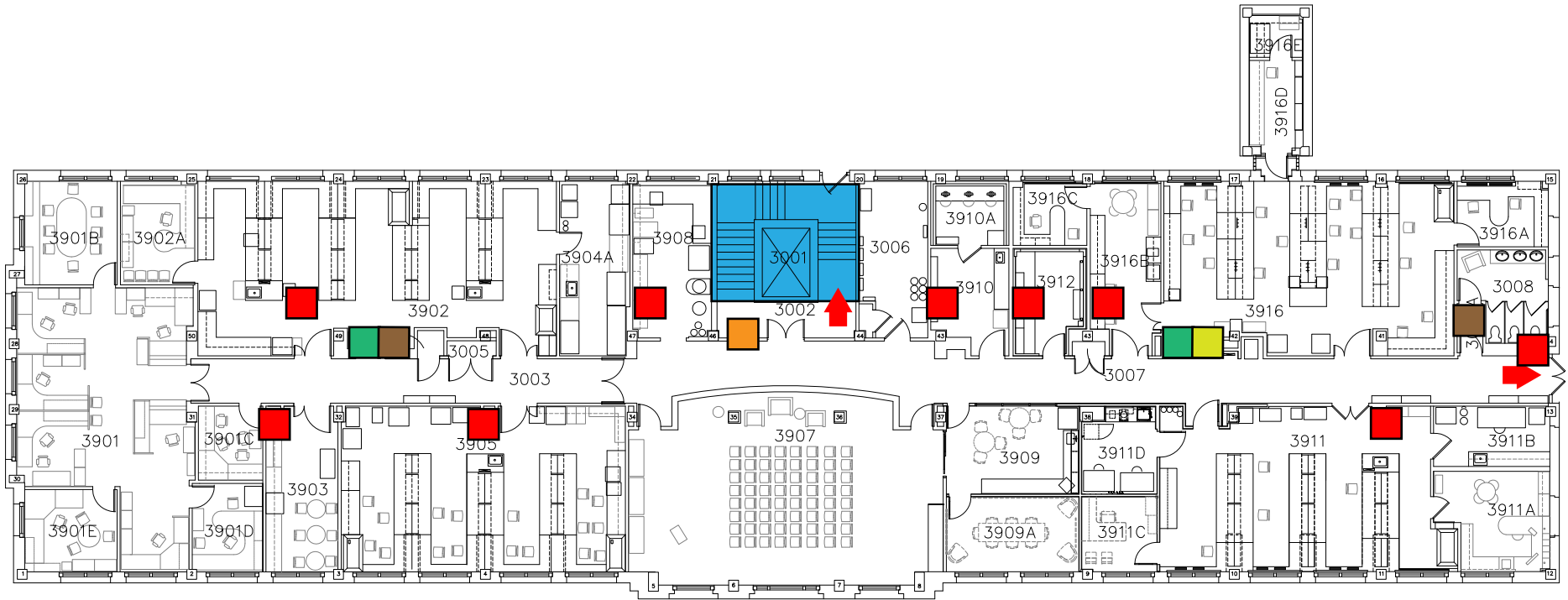










South Building - 3rd Floor



| | | |
|---|---|--|
|  Fire pull station |  Fire extinguisher |  Stairway |
|  Emergency shower |  Eye wash |  Fire blanket |
|  Defibrillator |  Emergency exit paths/points | |

In case of fire dial 314-362-4357. Use stairway for exit.
Do not use elevator.