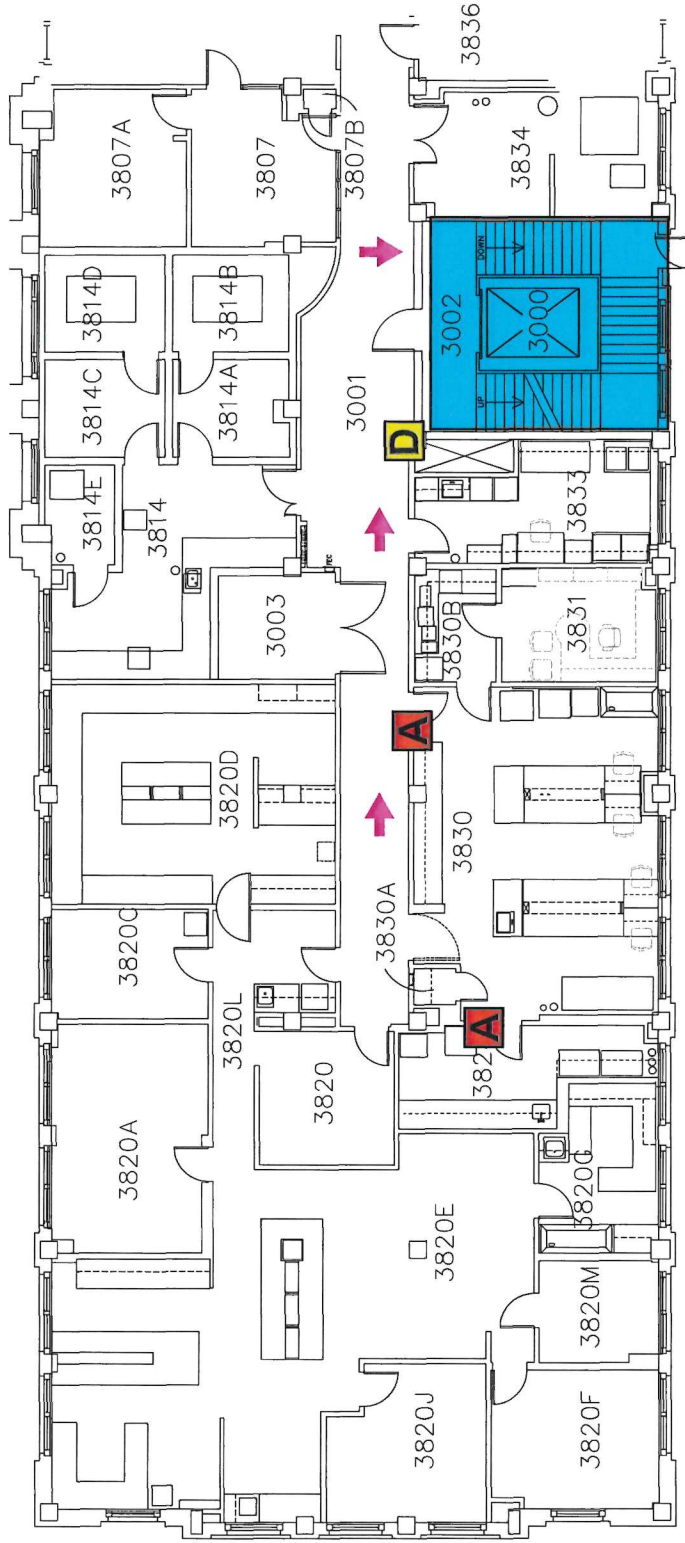


# North Building - 3rd Floor



<b>A</b> Fire extinguisher	<b>D</b> Eye wash	Stairway
<b>B</b> Fire pull station	<b>E</b> Defibrillator	Fire blanket
<b>C</b> Emergency shower	Emergency exit paths/points	

In case of fire dial 314-362-4357. Use stairway for exit.  
Do not use elevator.

**Emergency Assembly Point (EAP):**  
Northeast corner of Hudlin Park.